

iDirect X5 Evolution Series Activation Procedure

Step 1: Install and Upgrade your Modem Firmware and Configuration

Step 2: Point your Antenna to Correct Satellite

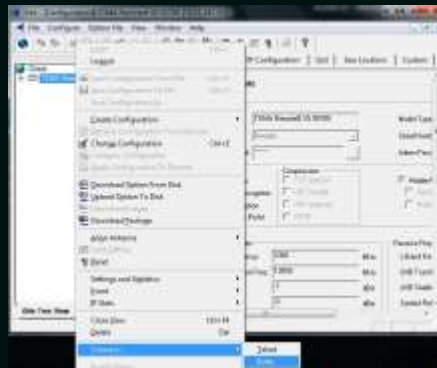
Step 3: Perform Isolation and Compression Tests

Step 1: Install and Upgrade your Modem Firmware and Configuration

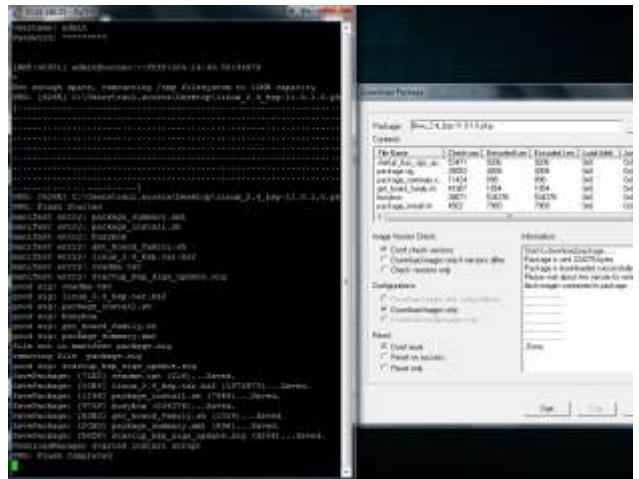
! IMPORTANT: Your modem must be running the correct firmware before uploading the options file. Please read these directions carefully and follow the instructions exactly as they are presented in order to avoid modem malfunction.



Picture 1.1



Picture 1.2



Picture 1.3



Picture 1.4

- Download iSite and install it on your computer:
<https://dl.dropbox.com/u/23718844/iDx3103-iSite.zip>
 - Download and save iDirect modem software packages:
https://dl.dropbox.com/u/23718844/Remote_Evolution_X5.zip
- Now, connect a cross-over cable from your modem to your computer and change your computer's IP address to the following:

IP Address: 192.168.0.2 Subnet Mask: 255.255.255.0

Open iSite. The left panel will show an icon for the connected iDirect modem displaying serial number and IP address (figure 1.1). If the modem's IP is 192.168.0.1 you may skip to next step and log in to the modem. If the modem's IP is different you must set your PC's IP address to the next contiguous IP address and proceed to next step.

Verify connectivity by pinging the modem IP address from your computer.
Do not continue if this test fails

! From iSite, log in to your modem using the default username "admin" and default password "iDirect" (if the modem does not grant you access, use "P@55w0rd!" as your modem's password. If the modem had been used with a previous provider, password may be different) Now, right-click the modem icon in iSite and scroll down to "Connect" on the drop-down menu. Select Putty or Telnet (see picture 1.2 for details.) A command line prompt will display asking for credentials. Log in using the same username and password used with iSite.

In iSite, click on "Download Package" and select the "linux_2.4_bsp-13.0.0.1.pkg". Make sure the Reset option is set to "Don't reset" and click "Start". Wait for the remote to finish flashing the image ("flash completed" in the telnet session must appear; See picture 1.3) and click on "Open" once again. This time select "evo_x5_rmt-13.0.0.1.pkg" Make sure the settings have not changed; confirm that the "Reset" option is still set to "Don't reset", and click "Start".

Once modem finishes flashing this image ("flash completed" in the telnet session must appear), exit the "Download Package" window and select the option "Download Option from Disk". Select the Options file you received from us via e-mail, named, "R#####.opt", and click "Open".

After the Options file finishes loading, iSite will prompt you to "Reset Now" or "Reset Later". Click "Reset Later" (see picture 1.4)

In the telnet session, type the command "reset board" (without the quotations). This will safely reset your modem. The new upgraded firmware and configuration will load only after the modem has been reset.

Step 2: Point your Antenna to the Correct Satellite

Based on your newly configured modem IP as shown in iSite after modem's reset, set your computer's IP address to the next contiguous IP address.

Once you have upgraded your modem to the correct firmware version and loaded the new options file as instructed in Step 1, you can begin the procedure of pointing your antenna. Connect the Rx cable from your antenna's LNB to the Rx port (see picture 2.1) on the back of your modem.

Note: Do not connect the Tx cable yet. Tx cable must remain disconnected at all times during antenna alignment.



Open iSite, connect and log in to your modem using the supplied username and password. As user name use "admin" (without the quotes) if otherwise not specified. On iSite's, click on antenna pointing from the top menu (see picture 2.2).

Align your antenna with the values supplied in the "Look Angles Calculator" window, azimuth, elevation - offset, and polarization (antenna offset can be verified through antenna manufacturer).

Note: azimuth shown is "geographic" not "magnetic". To use a compass, you must make the conversion based on geo location.

Click on the "Antenna Pointing" tab and click on "Start", then begin adjusting your antenna, starting with azimuth and elevation, until you reach the highest voltage possible on iSite's Volts meter. Then, you must turn the polarizer (feed) to gain Volts and minimize the possibility of cross-pole interference. Note that if the antenna is aligned with an adjacent satellite, the voltage will remain below 4 Volts; only in the correct satellite you will obtain above 8 Volts. Remember, the better you align the antenna, the higher the Volts meter will read. Once you have acquired the maximum amount of Volts possible (see picture 2.3), click stop on the Antenna Pointing window. Your modem Rx LED will turn solid green (see picture 3.1) to indicate a LOCK on our transmission carrier.

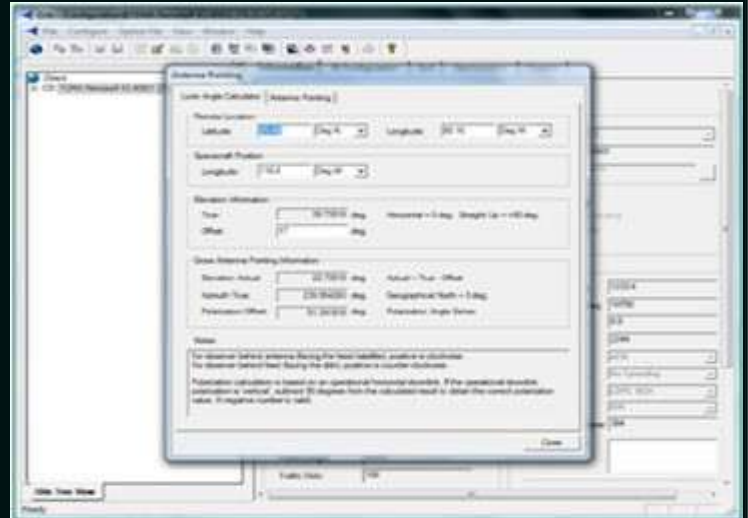


Picture 3.1

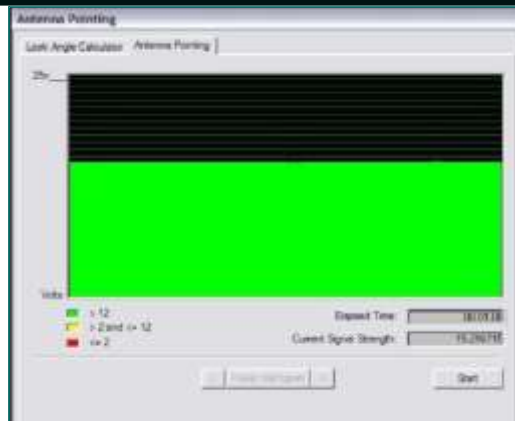


Picture 2.1

Tx to BUC Rx from LNB



Picture 2.2



Picture 2.3

Step 3: Isolation and Compression Tests

You must call the NOC based on activation schedule specified below to proceed with final steps of activation.

The Most Effective Way to Contact Us and Obtain Immediate Feedback with Activation is by Submitting a Service Request through our Website www.poulsat.com

Or Email:
noc@poulsat.com

*** Please Note ***

Activations are conducted between the hours of 0700 EST and 1900 EST
(11:00 GMT and 23:00 GMT) Mon-Fri.